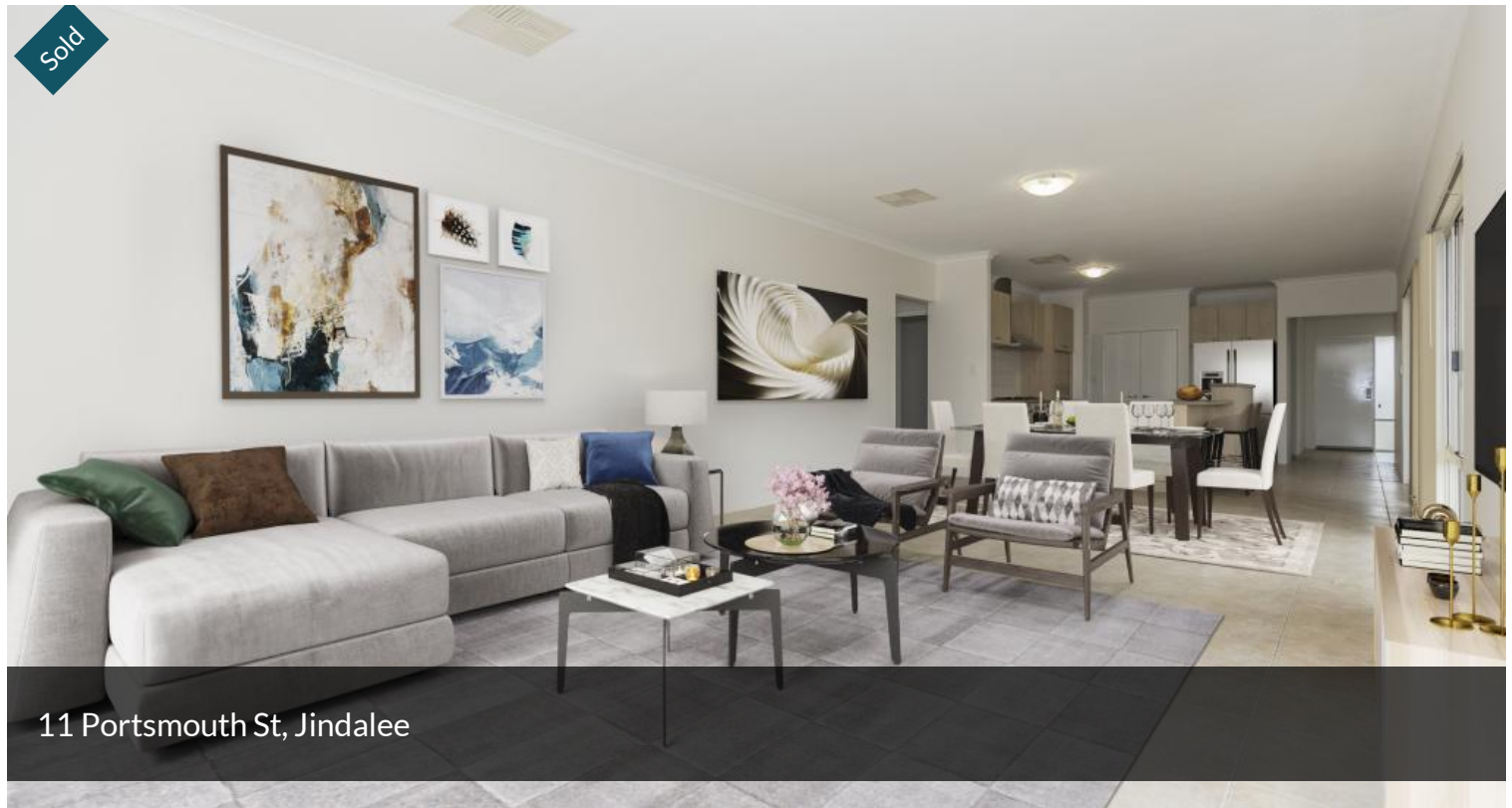


Sold



11 Portsmouth St, Jindalee



FANTASTIC FAMILY HOME!

Really hard to fault this wonderful property! Sitting on a 517 sqm block, and located in the beautiful suburb of Jindalee, there are great features for the family who wants a beautiful home that is close to schools, shops, ocean, park, restaurants, café, medical centres and the list goes on!

- 4 bedrooms, master bedroom with ensuite
- A separate bathroom, separate toilet
- Study
- Separate Games
- Kitchen with meals and family, fully equipped with oven and stove top
- Spacious laundry
- Air-conditioning
- Patio and a large lush garden
- Double lockup garage

Don't miss the opportunity to make this property your Home!

The above information provided has been furnished to us by the vendor/s. We have not verified whether or not that information is accurate and do not have any belief in one way or the other in its accuracy. We do not accept any responsibility to any person for its accuracy and do no more than pass it on. All interested parties should make and rely upon their own inquiries in order to determine whether or not this information is in fact accurate.

🛏 4 🚿 2 🚗 2 📏 517 m2

Price	SOLD for \$570,000
Property Type	Residential
Property ID	842
Land Area	517 m2
Floor Area	193 m2

AGENT DETAILS

Nancy Wong - 0439 852 582

OFFICE DETAILS

Firstland Real Estate
Unit 4, 269, James Street
Northbridge WA 6003 Australia
08 93056888

